

Strategic Ministry Plan – Faith Community Church

MISSION

The Lord Jesus Christ gave the church our mission when He said “...Go and make disciples of all the nations, baptizing them in the name of the Father and the Son and the Holy Spirit. Teach these new disciples to obey all the commands I have given you...” (Matthew 28:19-20)

The mission of the church, in general, is to make disciples. Disciples are learners and followers who become influencers and leaders. We are on this growth walk, pursuing Jesus, and we have the privilege to invite others to join us and grow with us. The mission of making disciples should be true of every church in every place.



We have a unique purpose at Faith Community Church. We are a specific kind of church. We have been called to be a progressive community of faith. We will not sit back and wait for the trends. We aim to follow Jesus in “cutting edge” ministry. But, we intend to do it together, as a biblically functioning community. We will aim to reach people who have given up on church or who have never even considered that God could make a real difference in their lives. And, we will give each person the opportunity to grow in a genuine relationship with Jesus toward true freedom, deep joy, and the purposeful life God designed for him/her.

PURPOSE

Faith Community Church exists to multiply progressive communities of faith, escorting unchurched people to the freedom, joy and purpose of life in Jesus Christ.

CORE VALUES

We will function in a way that is consistent with these core values.

1. Our highest value is to please God.
2. Lost people matter to God and to us.
3. Spirit empowered teaching of the Bible changes lives.
4. The truth will be presented in an understandable way.
5. Our relationships with others reflect our relationship with God.
6. We will grow together as we exercise our spiritual gifts effectively.
7. Real connectedness and life change happens best in small groups.
8. We will be a significant influence in our community.
9. Excellence & creativity honors God, reflects His character, and inspires people.
10. Those gifted, called and qualified to lead will lead.

LIVING OUT OUR MISSION AND PURPOSE IN LIGHT OF OUR VALUES

Our mission, purpose and values must be lived out. Jesus said, "All those who love me will do what I say. My Father will love them, and we will come to them and live with them." (John 14:23) If we are going to walk with God, then we need Him to show up. God desires people who honor His Word and whose walk and talk are faithful and true.

Our purpose statement clarifies why God has lead in the establishment of Faith Community Church. We exist to multiply progressive communities of faith, escorting unchurched people to the freedom, joy and purpose of life in Jesus Christ. So, what does that mean?

We will **MULTIPLY** -

1. Multiplication through the family
Faith Community will be a place that values the family. We will provide effective training for parents in order that they fulfill the biblical command to model and teach their children to live in a way that honors the Lord.



2. Multiplication through the next generation

We will be a place that invests heavily in the training of future generations. We will seek to provide the most encouraging, stimulating and challenging teaching for youth and children.

3. Multiplication through individuals

We will encourage each person to grow in relationship with Jesus Christ and share that relationship with others. We cannot grow by cultivating a self-focus, but through a God focus that points us toward others.

And, as we find a meaningful place of serving in the family of God, we will encourage people to “multiply” themselves by training others to serve with them and come after them.

4. Multiplication through the church family

We are committed to follow God in the multiplication of our church. Jesus said, “My true disciples produce much fruit. This brings great glory to my Father”. (John 15:8) This will be true of us individually and corporately. Again, Jesus said “[...] will build my church, and all the powers of hell will not conquer it.” (Matthew 16:18) We have the thrilling opportunity to cooperate with God in the completion of His plan through the planting of new churches.

PROGRESSIVE ~

1. Growing through celebration

We are people who have come to know the “Good News” that Jesus has set us free. We need not apologize for enjoying God. We should honor the Creator in creative ways.

2. Teaching purposeful living

In order to “progress,” we need to progress toward something. God has designed each of us with a purpose, and we will challenge people to discover and live out God’s purpose for their life.

3. Living out our core values

We plan to progress in excellence. We will work hard to give God the very best we can in every area. And, we will be people of integrity. We will learn the truth from God, speak the truth with each other and live out the truth in our community. We will find unity in the truth as we live out our relationship with Jesus, our mission, purpose and shared values.



4. Growth orientation

We expect to grow. We expect to “bear fruit” as we follow God. We will be as “user friendly” as possible. We will avoid the use of “Christianese” and “insider” language. We will purposely design events that will make it as easy as possible to introduce others in our church family to those we are personally building relationships with.

COMMUNITIES OF FAITH-

1. Beginning with faith

We will depend on the strength and direction that comes only from God. So, we will be people who pray. Prayer is not to be confined to a meeting, a posture, or a group, but will be a lifestyle and a consistent practice. We will ask Jesus, just like the disciples did, to “Teach us to pray...” (Luke 11:1) We will encourage each other to grow through conversations with God.

2. Deepening spiritual relationships

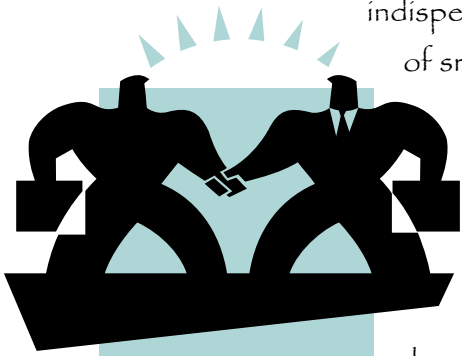
✓ mentoring

For most, beginning their walk with God requires a guide. This is the most intimate form of disciple-making. We will pursue one-to-one and one-to-two connections to help people lay a firm foundation in their first steps with God.

✓ community and accountability through small groups

God designed us to grow in connection with others. Relationships are indispensable for real growth. We will facilitate the development of small groups so people can grow through mutual

encouragement and accountability, encountering God through His Word and doing life together. We will encourage people to be “real”. This will get messy, but we will love each other through it all and we will see God at work. Small groups provide the best atmosphere for deep spiritual fellowship and accountability.



3. Local church priority

- ✓ We will be consistent in our commitment to God's work of building His kingdom through the local church.

- ✓ community connections

God wants Christians to be unified in truth and mission and to make a significant impact on their local community. We will cooperate with other evangelical churches wherever possible in order to advance Christ's kingdom. And, we will be helpful participants in other community organizations where possible. The integrity of our teaching must be guarded and advanced.

- ✓ worldwide extension

As God leads we will connect with national churches and/or national church planters who share our vision for progressive, multiplying churches that target the unchurched.

4. Teaching a deep trust in God

- ✓ systematic teaching

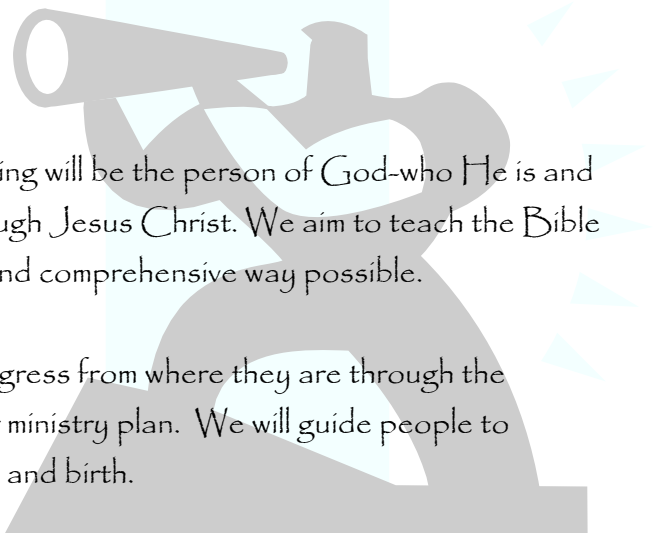
The focus of our teaching will be the person of God—who He is and what He has done through Jesus Christ. We aim to teach the Bible in the most compelling and comprehensive way possible.

- ✓ covering the bases

We will help people progress from where they are through the maturing process of our ministry plan. We will guide people to believe, belong, become and birth.

- ✓ deeper study

We aim to provide opportunity for deeper, more demanding study of the Scriptures. Our intention is to guide disciples of Christ to "handle the word of truth accurately". The aim of all study of the Scripture is that we might more fully honor God with the fruit of our life. Our teaching will be aimed at character transformation and life application rather than simply aimed at greater knowledge.



UNCHURCHED PEOPLE -

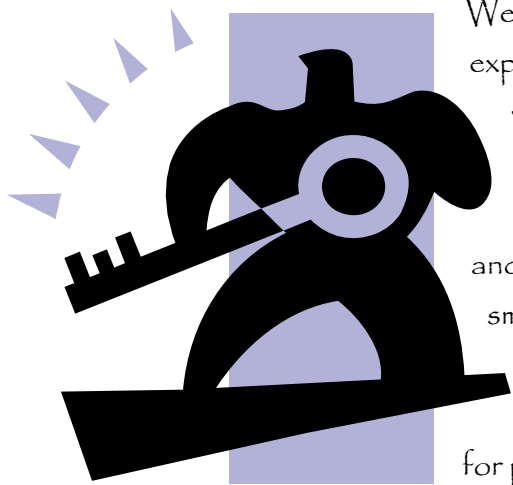
There are four kinds of people. There are “believers” (those who have come to faith in Jesus Christ as the only way of forgiveness) and there are “unbelievers”. Then there are people who are “unchurched” (people who do not have a meaningful connection with a local church) and there are “churched” people.

We will intentionally target those who are unchurched unbelievers. A secondary emphasis will be toward those who have a genuine relationship with Jesus Christ but have been turned off or damaged by the church.

CHURCHED BELIEVERS Target Priority: None	CHURCHED UNBELIEVERS Target Priority: None
UNCHURCHED BELIEVERS Target Priority: TWO	UNCHURCHED UNBELIEVERS Target Priority: ONE

Targeting the “unchurched” will have some definite characteristics.

1. The way we think, act and speak.



We need to think seriously about what an unchurched person experiences when they walk into the church for the first time, what genuine love might look like to them and how we can communicate most effectively.

People need to have a genuinely welcoming experience and be incorporated into the life of the church family as smoothly as possible. This will affect everything we do, from the words we speak to the signs that help guests find their way around. We want to provide a safe place for people who may think they have no place in the church.

This should be a safe place for each person to hear a life-changing message.

2. As reflected in our personal and organizational schedule

We aim to maintain a church schedule that will allow people to develop relationships with people outside the church. We will not encourage people to fill their schedule with church stuff.

This also assumes people in the church will grow in discernment. We encourage each follower of Christ to be involved in: corporate worship, meaningful ministry, small group fellowship, personal study and devotion.

3. Community impact

We intend to be a significant resource and influence in our local community. We aim to position ourselves and our facilities so strategically that our ministry will affect every person in New Richmond.

Our church family is encouraged to serve Christ through involvement in many organizations and activities outside the church. The relationships developed in this way should expose the community to the lifestyle of a follower of Christ and serve as an introduction to the Kingdom of God.



4. Purposeful outreach

We will invest significant resources to facilitate the outreach of our church family. We will build our corporate outreach on the assumption that the individuals in our church family are developing meaningful connections with their unchurched friends and neighbors.

We will encourage “on-deck” events which are simply, any opportunity to expose those we are building a relationship with to others who are followers of Christ.

On-deck events can be: Personal, such as inviting a few friends over to your home for dessert and games. Small group based, inviting unchurched friends together for some connecting kind of activities. Or corporate. Church sponsored, church-wide opportunities to invite unchurched friends to an event which encourages the deepening of relationships.

5. The way we “do” church

We will not let “church” traditions overshadow the Scriptures. We will all have personal preferences but we will do our best to hold to what the Bible teaches and communicate the truth of God as effectively as possible.

FREEDOM, JOY AND PURPOSE OF LIFE IN JESUS CHRIST-

1. A focus on Jesus Christ

If we really intend to escort people to freedom, joy and purpose, we acknowledge these only come through a personal relationship with the Lord Jesus Christ. He is the head of this church and our highest aim is to follow His lead in all things.

2. Development of discernment and personal conviction

We will encourage personal growth in the context of the church community. Individuals are ultimately responsible for their own growth and obedience. We will provide every resource we possibly can. Our church family will allow freedom to develop personal convictions where the Scriptures give us the freedom to do that. We will provide opportunities for people to learn how to study God's Word for themselves, communicate with God personally, grow through meaningful service and engage in meaningful worship.

3. Application oriented teaching

God says He is working in us to change our character to be like Jesus (Rom. 8:29). We will not be satisfied to help people know more "about" God. We long to help people know God personally and continually grow in their relationship with Him.

4. Gift oriented ministry

The Bible says *every* believer has been given spiritual gifts. These special abilities are to be used to strengthen the church family. Effective exercise of spiritual gifts is also a significant step of growth for each one who longs to know God's purpose for their life. We will provide spiritual gift training, counsel and placement. We want to be a place where people can take some calculated risks and be given honest, encouraging feedback and assistance so that each one may find the most meaningful area of service.

With all this in mind we sum up the calling of God on Faith Community Church this way: We exist to multiply progressive communities of faith, escorting unchurched people to the freedom, joy and purpose of life in Jesus Christ.

In order to be as effective and efficient as possible we aim to keep our structure as simple as possible. One of our core values is to allow those with leadership gifts, calling and qualifications to lead.

LEADERSHIP AND STRUCTURE -

1. Leadership gifts and calling



Leadership is listed among the spiritual gifts (Rom. 12:8) and can be exercised in a variety of ministry roles. Understanding our commitment to the proper exercise of spiritual gifts and following God's guidance we will seek to mobilize gifted, called and qualified men and women to really lead. Leaders will be held accountable to the Scriptures.

2. Elder qualifications

A team of men who have shown their calling through godly character, effective ministry and who have been affirmed by the church family will guide the church as elders.

3. Elder authority

No individual elder has more authority than any other member of the church. Elders exercise authority under God, as they discern God's leading not to advance any singular position. God can speak through any person, it is the responsibility of the elders to seek God and discern His leading for the church together.

4. God's direction

Our highest aim is to follow God and to be involved in what God is doing in us and through us. There are times when God's direction is hard and is not the "majority" opinion. We will seek to follow God.

5. A commitment to team ministry

We have been designed by God to grow through relationships and there is tremendous value to serving God in a team. Others can support us where we are weak and we can do the same for them. We learn to hear other perspectives that have merit. And, we discover we are stronger together than we will ever be alone.

HOW DO WE START NEW MINISTRIES?

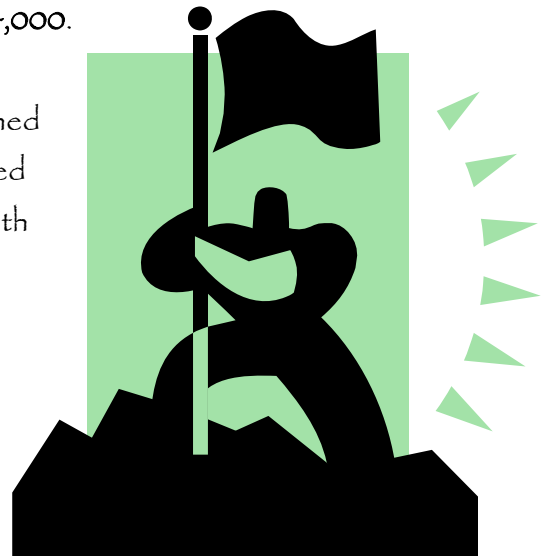
1. Visionary, passionate, accountable leadership
We will not begin new ministries until God leads through the identification of a key leader with passion to pioneer and establish the new work.
2. Consistency with our purpose
The ministries of our church need to be consistent with our overall purpose and must compliment or advance other ministries. We need to ask, "What specific part of our church's purpose will this ministry advance?" "How does this take us closer to achieving our purpose?" And in evaluating current ministries, "If we were not already doing this would we start now?" "Is this ministry achieving what it was designed to achieve?"
3. Wise risk-taking and ongoing evaluation
We will support growth toward excellence through accountability and goal setting. Our goals will be achievable, important, measurable and specific. We will make wise use of our resources. It is not bad to close an ineffective ministry. It is bad to continue an ineffective ministry.

OUR TARGET GEOGRAPHY-

We will place a priority on the population within a ten-mile radius of New Richmond. This gives us a target population of approximately **24,000**. According to Barna Research, up to **60%** of the population is "unchurched" which gives us an unchurched target audience of **13,647**. But, just as God instructed the early church in Acts 1:8, we cannot be satisfied with staying local. We will move toward effective ministry through church planting around the world.

TARGET AUDIENCE-

This "description" is intended to provide a framework for our thinking when we make specific programming decisions at Faith Community Church. We put a particular emphasis on communicating with Rich.



Meet Rich (34) and Rita (32) Richmond. They have a seven year old daughter, Reba and a four year old son, Rambo. Rich and Rita met at the University of Minnesota where Rich studied Business Administration and Rita received a degree in Accounting. They moved from Woodbury into the Southview subdivision three years ago. Rich graduated from New Richmond High School in 1991. Rita grew up in St. Paul. Rich is employed as a Finance Director at Phillips Plastics and Rita works in the Customer Service Department at Andersen Windows in Bayport. Rich is a sportsman who enjoys hunting and fishing. He is also an avid Packer fan. He likes to relax by watching TV. Of course, whenever the Packers play, just stand back and no one will get hurt. He is confident someday Rambo will fill Brett Favre's shoes. Rich's favorite means of transportation is his black 2003 GMC truck; that is, when he's not on his ATV or Arctic Cat snowmobile. The Richmond's also enjoy golfing at the New Richmond Golf Course when they can fit it in.

Rita is very active, maybe too active. She enjoys shopping at antique shops and some of the small, unique gift shops in the area. She stays active by playing golf, and works out at YMCA at least three times a week. She really doesn't feel like she has any "real" close friends in New Richmond. Rita drives a '99 Toyota Corolla, but would love to have a new Honda CR-V. Most of the television Rita watches is HGTV and she is constantly redecorating something.

Reba is doing pretty well in second grade and really enjoys her teachers. Every day she comes home full of stories she can't wait to share with her mom and dad. Rambo is spending a half day at preschool before going to daycare. Rambo is a "livewire" who's full of energy. The family doctor has recommended medication for ADHD.

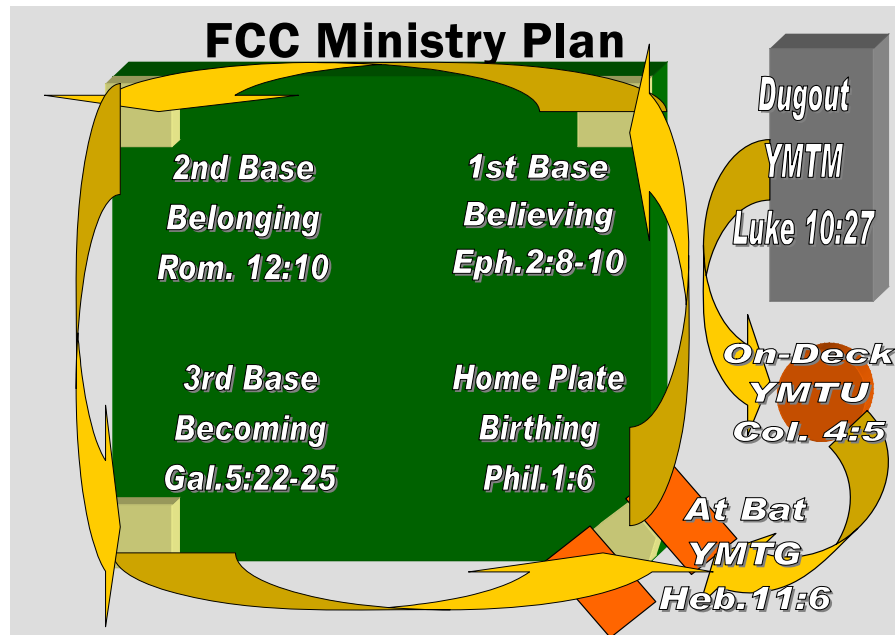
Rich and Rita have not attended church regularly since they left home for college except for Christmas and Easter services. Rita grew up in a Catholic family and they attended church regularly. Rich's parents were members of the Lutheran church before their divorce. Rich's mom has since moved to Tampa, Florida to be near her sister. Rich's dad now lives in St. Paul but they don't see him very often.

HOW DO WE EFFECTIVELY REACH RICH AND RITA AND GUIDE THEM TO MATURITY IN CHRIST?

THE DUGOUT – This is where we live and work and play. Rich and Rita are our neighbors and friends who have no connection to God or the church. We want them to know “You Matter to Me.”

ON-DECK – These are opportunities to introduce our friends to others from our church family who care about them. On Deck events can be large church-wide events or simple, small gatherings at home. In either case, they are fun opportunities to demonstrate to our friends “You Matter to Us”.

ATBAT – We now invite our friends, the Richmond’s to step up to Bat. This is where they actually take the risk of attending church. They can stay at “bat” as long as they want in order to learn what it



means to be a follower of Jesus. We want to engage them effectively, and remove as many barriers as we possible while holding true to the Scriptures. We want them to experience in as many ways as possible, “You Matter to God”.

FIRST BASE – This is the life-changing step of placing personal faith in Jesus Christ. While we would like Rich and Rita to take these steps together, they may not. In any case, at first base; they believe and the adventure really begins.

SECONDBASE – At 2nd Base, our friends will learn what it means to Belong. This is where we learn what it means to be a part of the Body of Christ, the Church. These will be the 200 level classes that help the new believer discover how they can grow through relationships and serving.

THIRDBASE – At 3rd Base, we grow to become. These 300 level studies will focus on character growth to become more like Christ. While we won’t finish our character growth until we reach heaven, these studies will help us progress in the right direction.

HOME PLATE - At Home Plate, we Birth. The 400 level courses will help us to learn how we can be effective in communicating with the people we hang out with in the dugout. We will invite them to walk with us.

SO, IF WE LIVE THIS OUT, WHAT MIGHT GOD DO THROUGH FAITH COMMUNITY CHURCH IN THE NEXT FIVE YEARS?

- We will have planted two daughter churches and have one granddaughter.
- Our weekly attendance will average 700.
- More than 50% of our regular attenders will be growing in some kind of small group.
- More than 50% of our regular attenders had no meaningful connection with God or a local church before connecting with FCC.
- We will have a facility that will be used widely for “community” events (little league, birthday parties, community forums, volleyball league, etc.) Oh, yeah, and will also be the home of Faith Community Church.
- We will play a key role in regional church planting and be engaged in training church plant leadership.

WHAT WILL FAITH COMMUNITY CHURCH LOOK LIKE IN TWENTY YEARS?

Can you believe that God could use us to plant eight daughter churches, have six granddaughters and three great-granddaughters? The combined attendance of our “offspring” will surpass the current population of New Richmond.

JOIN GOD FOR THE ADVENTURE OF A LIFETIME!

This is what the Lord says: “Cursed are those who put their trust in mere humans and turn their hearts away from the Lord. They are like stunted shrubs in the desert, with no hope for the future. They will live in the barren wilderness, on the salty flats where no one lives.

*But blessed are those who trust in the Lord and have made the Lord their hope and confidence. They are like trees planted along a riverbank, with roots that reach deep into the water. Such trees are not bothered by the heat or worried by long months of drought. Their leaves stay green, and they go right on producing delicious fruit. **Jeremiah 17:5-8***